

# The Life Cycle of Plants

The life cycle of plants starts from the seed form, which is buried in the ground through different methods. It germinates and gives rise to the first leaves known as seedlings. Following this, the growth of the plant continues, and it reaches a mature stage, then it pollinates.



# Understanding The Process

## 1. Seed Stage

Seeds contain the embryo (baby plant) and a food supply, all protected by a seed coat.

Germination starts when a seed gets water, oxygen, and the right temperature.

## 2. Germination

The seed sprouts: the root (radicle) emerges first, anchoring the plant.

Then, the shoot grows upward, breaking through the soil.

## 3. Seedling Stage

A young plant called a seedling starts to grow leaves.

Leaves begin photosynthesis, producing food using sunlight, carbon dioxide, and water.

## 4. Mature Plant

The plant develops more leaves, stems, and roots.

It becomes strong enough to produce flowers or cones, depending on the species.

## 5. Flowering and Pollination

Flowers (or reproductive organs in non-flowering plants) develop.

Pollination occurs when pollen is transferred (by wind, insects, animals, etc.) from the male parts to the female parts of a flower.

## 🍏 6. Fertilization and Seed Formation

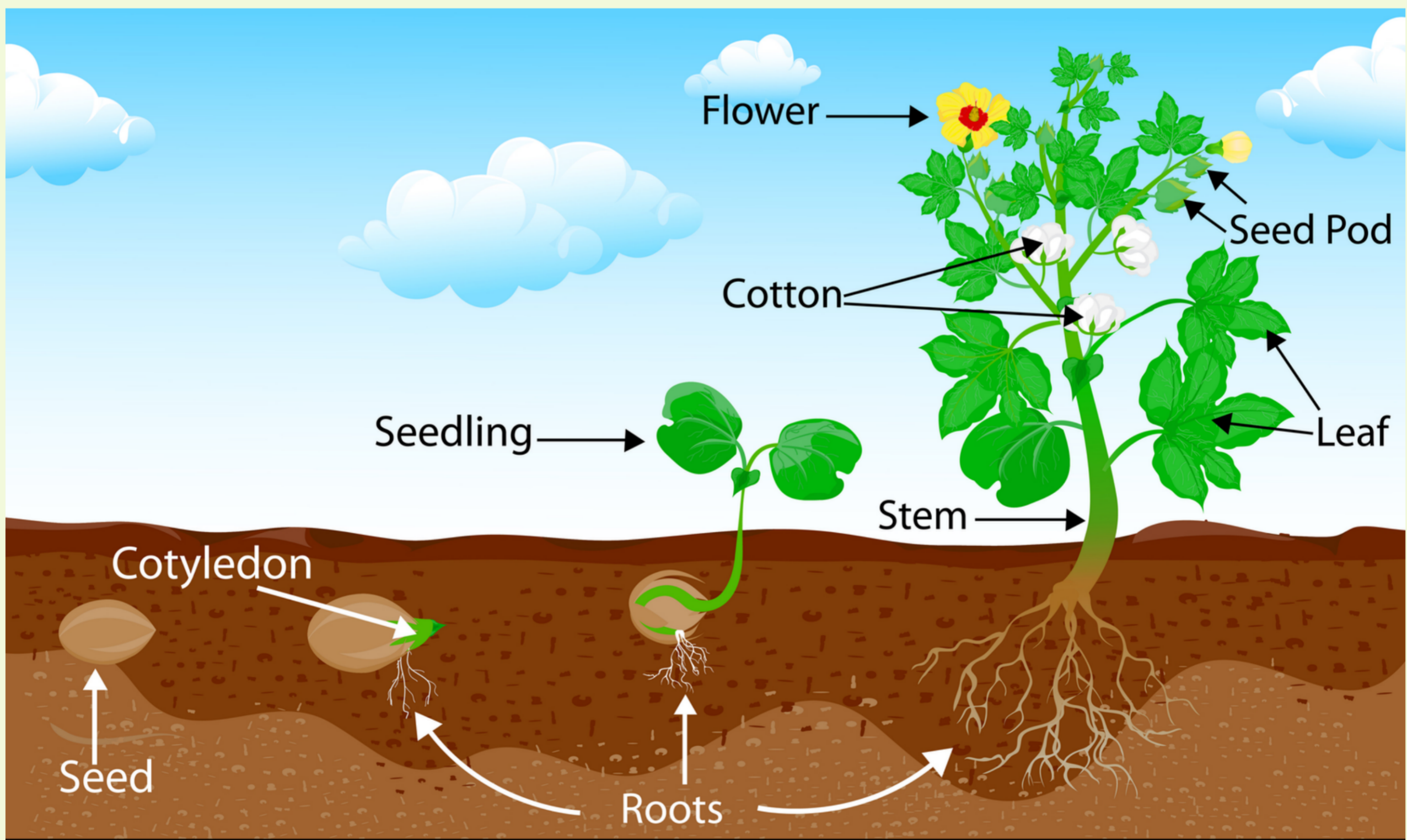
After pollination, fertilization happens — the sperm and egg combine to form a zygote.

This grows into a seed, often inside a fruit (in flowering plants).

## 🔄 7. Seed Dispersal

Seeds are spread away from the parent plant by wind, water, animals, or mechanical ejection.

This allows new plants to grow in new places, continuing the cycle.



**Merin Coopen - [Info@legacylearninginstitute.com](mailto:Info@legacylearninginstitute.com)**

